



Cellulosic Biomass for Bio-Fuel and Bio-power Applications

Frank Hardimon
Director of Sales – Ceres, Inc.

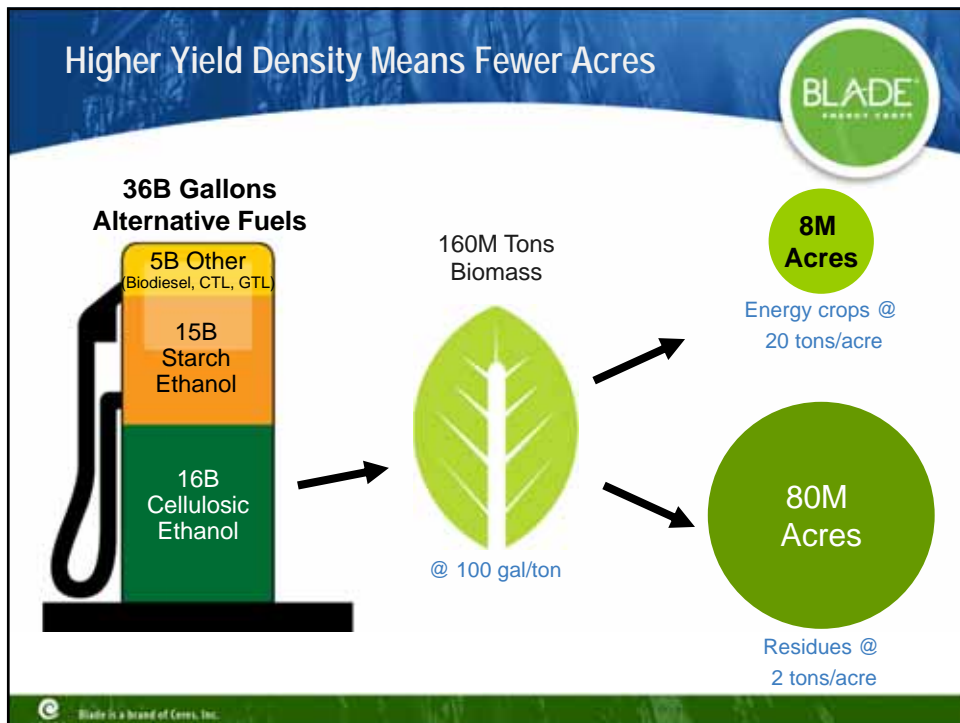
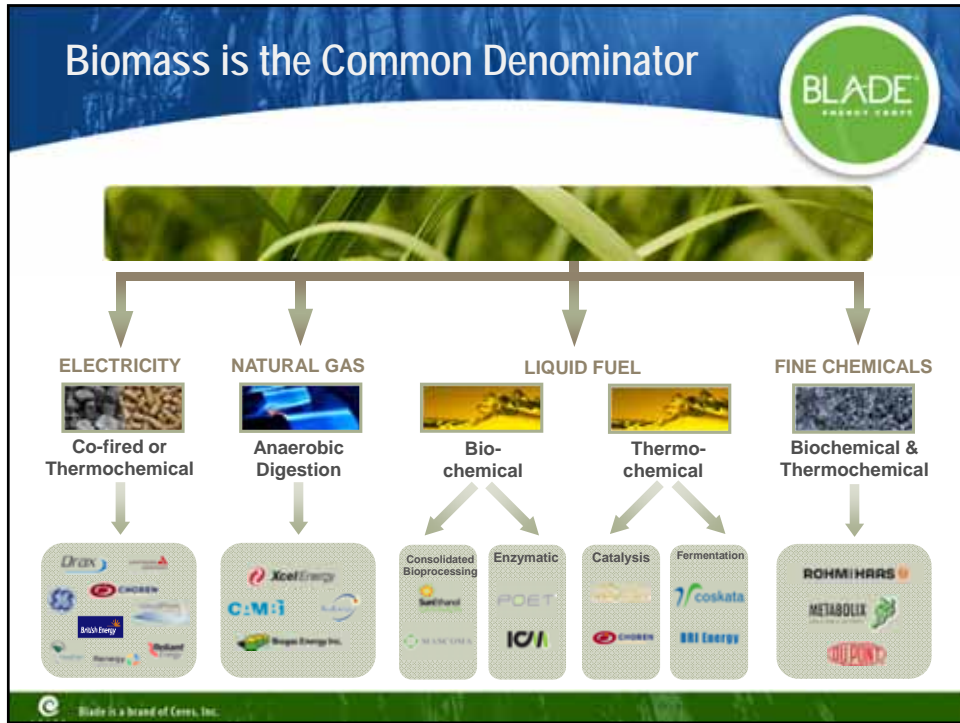


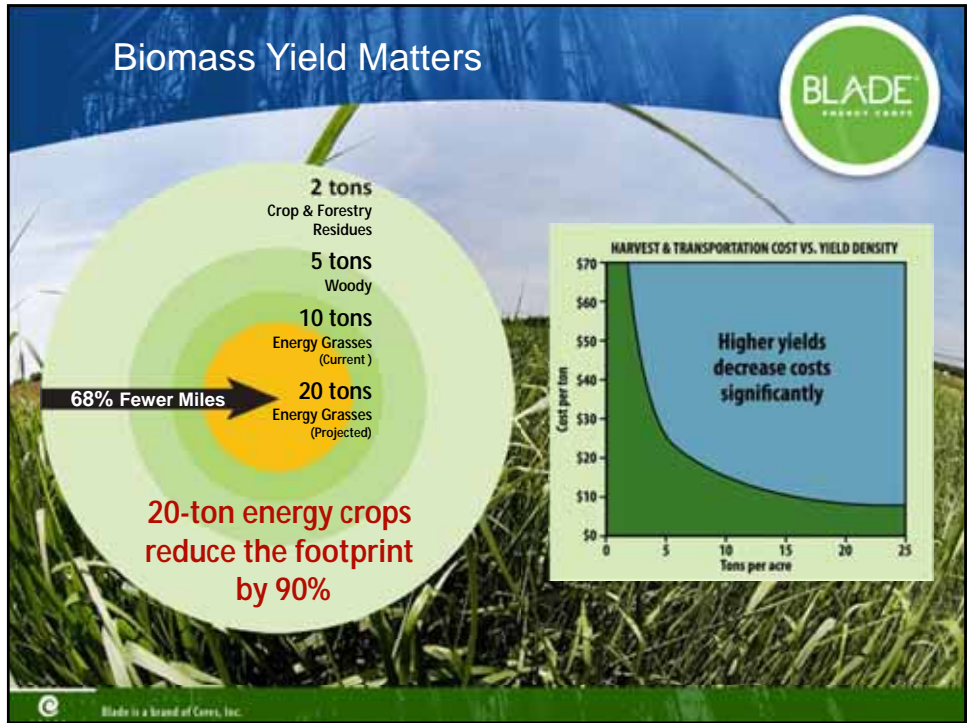
Premier seed brand of Ceres, Inc.



Ceres is an **integrated research & seed company** focused on developing and marketing energy crop varieties for **biofuels** and **biopower** production

© Blade is a brand of Ceres, Inc.





Biomass Crop Considerations

BLADE ENERGY GROUP

Perennial Grasses

- Switchgrass
- Miscanthus
- Sugarcane
- Prairie Cordgrass
- Mixed Prairie

Annual Grasses

- Sorghum
- Corn Stover



Woody Crops

- Willow
- Pine trees
- Poplar


- ALL crops and potential crops have pros and cons
- No "one-size-fits-all" solution
- Some are ready for large-scale commercial planting today, others need more work
- Ultimately will be a mix – at regional and farm level

Blade is a brand of Ceres, Inc.


Energy Crop Pipeline





Sorghum



Switchgrass



Miscanthus



Sweet Sorghum

Blade is a brand of Ceres, Inc. Miscanthus photo (lower left) produced by Peter Swatton, Visual Communications Unit, Rothamsted Research Ltd.




Ceres College Station Research Center




Forage Sorghum SKYSCRAPER

the energy crop company™



Nitrogen Use Efficiency increases yields and reduces fertilizer needs



High-Yield, Low-Input Trait

Control

the energy crop company™

This slide features a side-by-side comparison of two switchgrass plots. On the left, a plot labeled 'High-Yield, Low-Input Trait' shows significantly denser and taller grass. On the right, a plot labeled 'Control' shows much sparser and shorter grass. A person's arm is visible on both sides, holding a yellow measuring pole to provide scale. The background is a clear sky and a dirt path.

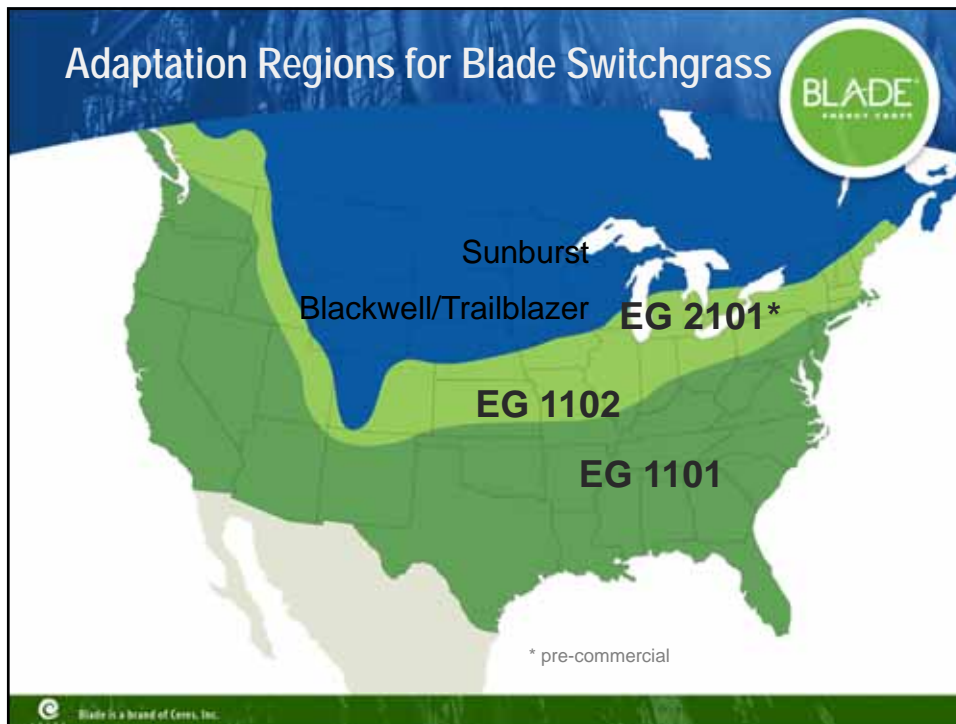
Switchgrass Breeding Program

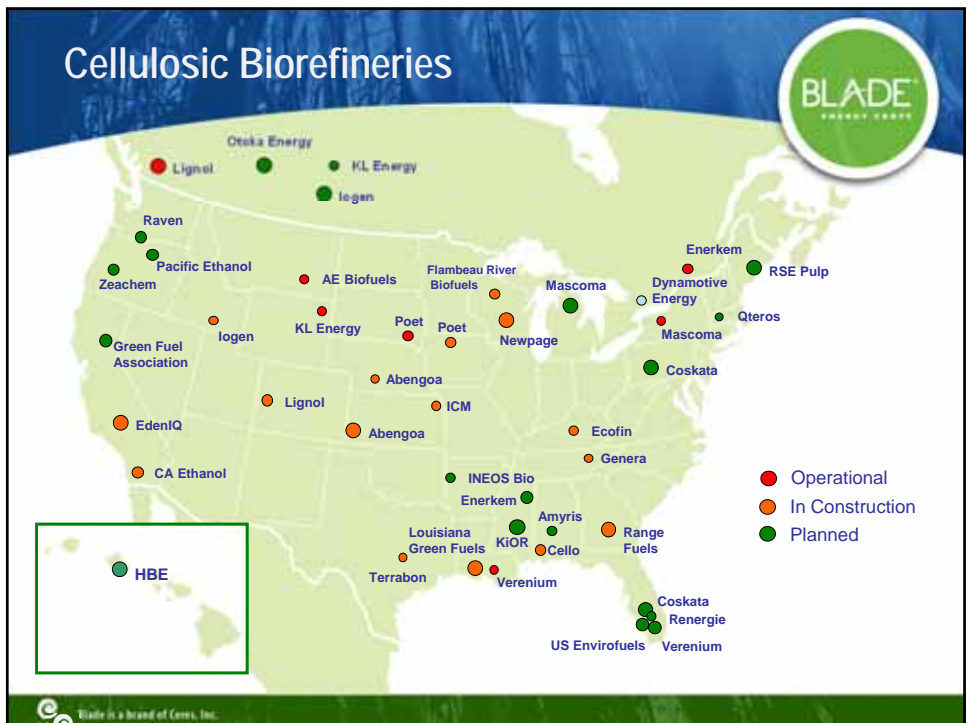
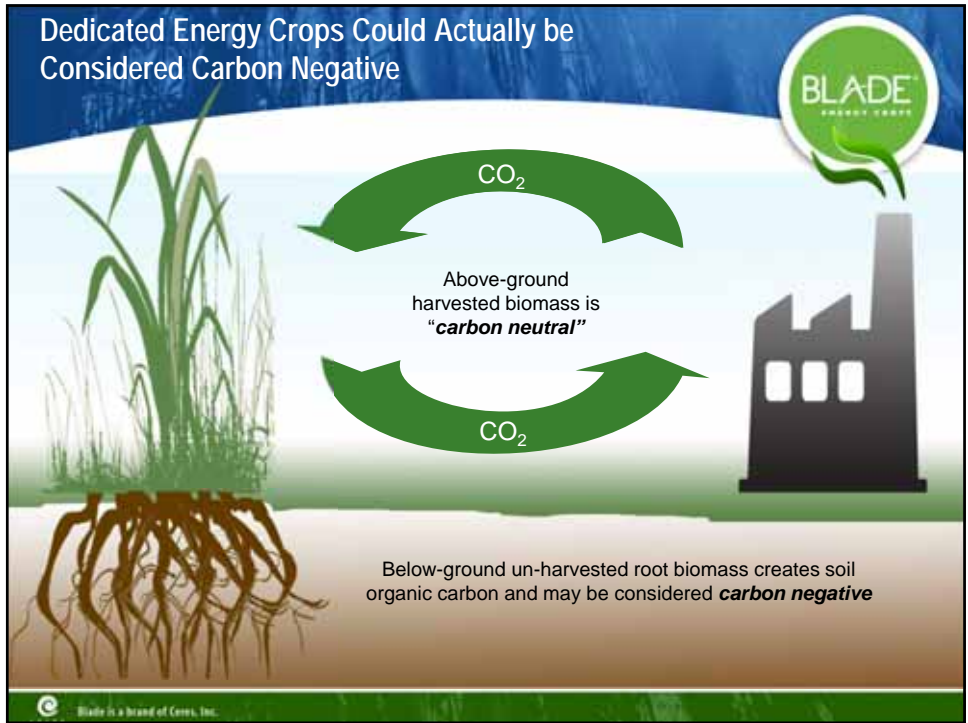


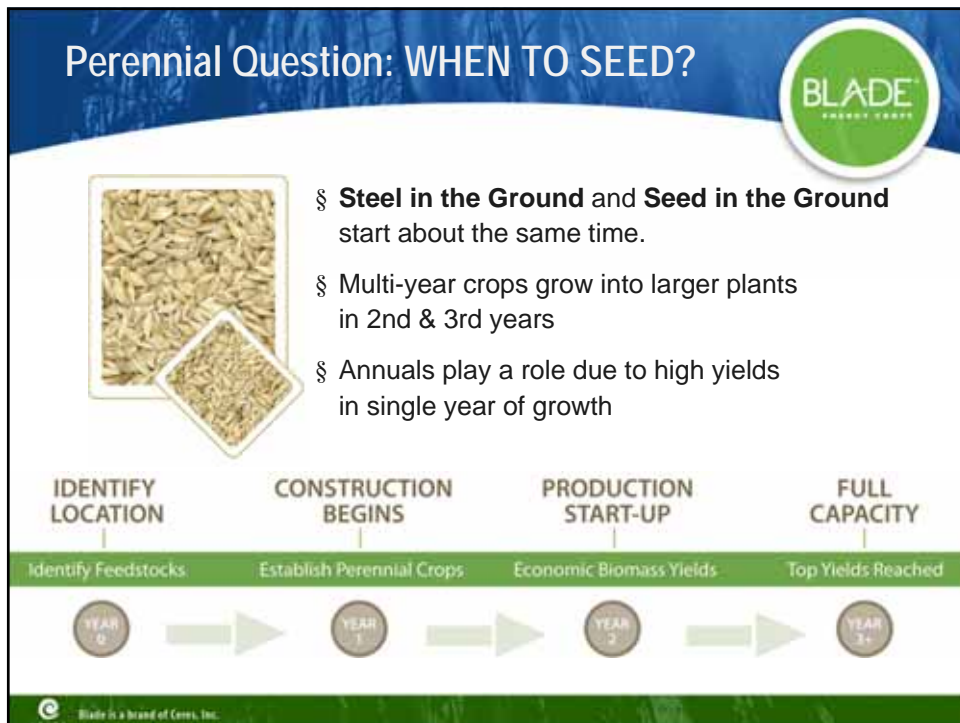
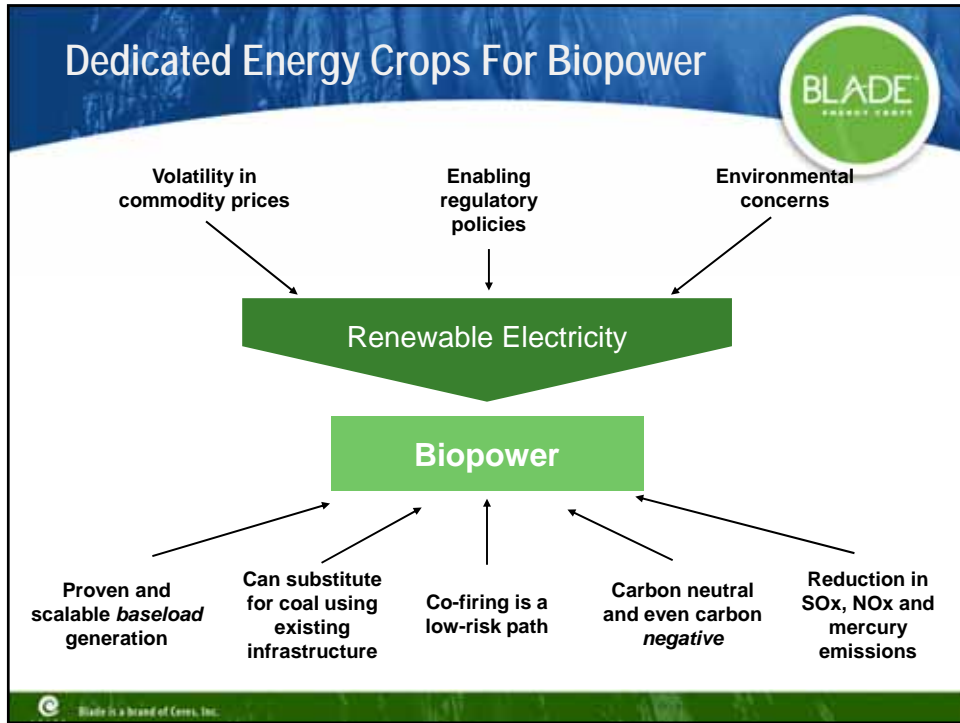
Biomass and establishment - Composition
Improved breeding systems - Seed quality improvements

BLADE is a brand of Ceres, Inc.

This slide shows a wide view of a lush green switchgrass field under a blue sky. In the distance, a few birds are flying. The top of the slide has a blue banner with the title 'Switchgrass Breeding Program' and the 'BLADE Energy Traits' logo on the right. At the bottom, there is a list of breeding goals and a small logo for 'BLADE is a brand of Ceres, Inc.'














Summary



- **“The next big thing in ag”**
 - Get ahead of the curve and help define the industry
- **Economic considerations and planned government programs**
 - Better uses of idle or marginal production land
 - Background on dedicated energy crop production costs
 - BCAP has been announced for reinstatement
- **Establish contact interested growers**
 - **Work with a network of farmers that is progressive**
- **Energy crop considerations**
 - Background on dedicated energy crops
 - Timelines for perennial crops and production systems
- **Getting started with a new crop category**
 - New management practices and markets

© Blade is a brand of Ceres, Inc.

Ceres, Inc.



This presentation contains forward-looking statements, including statements regarding our efforts to develop and commercialize our products, our short-term and long-term growth strategies, and market expectations. In many cases, you can identify forward-looking statements by terms such as “may,” “will,” “should,” “expect,” “plan,” “anticipate,” “could,” “intend,” “target,” “project,” “believe,” “estimate,” “potential,” or other similar words.

These forward-looking statements are only predictions and are based largely on our current expectations and projections about future events or trends that we believe may affect our business strategy or future performance. Because forward-looking statements are inherently subject to risks and uncertainties, you should not rely on these forward-looking statements as guarantees of future events.

We expressly disclaim any obligation to release publicly any updates or revisions to any forward-looking statements to reflect any change in our expectations or any changes in events, conditions or circumstances on which any such statements are based for any reason, except as required by law, even as new information becomes available. All forward-looking statements in this presentation are qualified in their entirety by this cautionary statement.

Nothing in this presentation shall constitute an offer to sell, or a solicitation of an offer to buy, any securities of Ceres, Inc.

© Blade is a brand of Ceres, Inc.

Thank you!

Frank Hardimon, Sales Director
fhardimon@bladeenergy.com
(217) 649-5579
www.BladeEnergy.com

