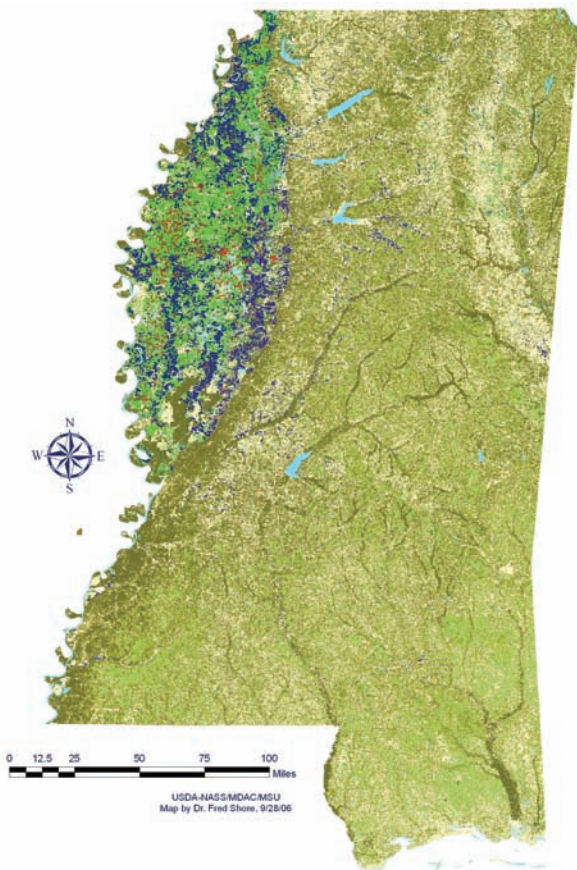


# CROPLAND AND TYPES OF FORESTS IN MISSISSIPPI (2005)



## LEGEND

- |   |   |  |
|---|---|--|
|  CORN                    |  COTTON            |  RICE |
|  SORGHUM                 |  HAY & OTHER CROPS |  |
|  SOYBEANS                |  WATER             |  PINE |
|  FALLOW, IDLE CROPLAND   |   |  |
|  HARDWOOD                |  PASTURE, OPEN     |  |
|  MIXED PINE AND HARDWOOD |   |  |
|  REGENERATING FOREST     |   |  |



## CONTACT US:

Mississippi Biomass Council, Inc.  
P.O. Box 9680  
Mississippi State, MS 39762

Contact: Liam Leightley  
Phone: 662.325.4444  
Email: [lleightley@cfr.msstate.edu](mailto:lleightley@cfr.msstate.edu)

Visit us on the Web at:  
[www.ms-biomass.org](http://www.ms-biomass.org)

# MISSISSIPPI BIOMASS COUNCIL



*The Voice of Biomass and  
Renewable Energy in Mississippi*



## WHO WE ARE

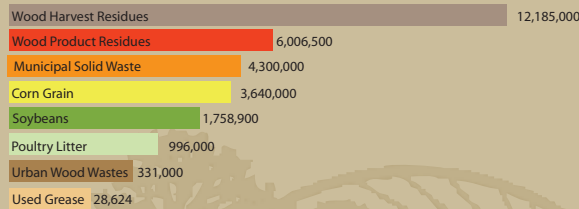
In order for Mississippi to be a leader in biomass utilization for the purposes of producing biofuels, biopower, and bioproducts, the multitude of stakeholders with specific interests in this sector must work together. The Mississippi Biomass Council, Inc. (MBC) offers a forum to share information for the purpose of assessing and communicating the available biomass resources within the state and supporting biomass technology development and utilization to actively produce products and methods which encourage biomass related economic development. Council members include representatives from agriculture, forestry, recycling, energy production, state and local government, higher education, research, manufacturing, and individuals interested in developing economic opportunities for biomass, increasing energy security, and reducing biomass waste streams. The MBC was created in 1998 and incorporated in 2000 as a 501(c)(6) nonprofit organization.

**The Mississippi Biomass Council is working to make the most of Mississippi's biomass resources.**

## WHAT IS BIOMASS?

Biomass is any non-fossil, energy containing form of organic carbon, and shall include, but is not limited to, all land and water-based vegetation such as trees, aquatic and marine plants, algae, and herbaceous crops; and organic wastes such as those contained in municipal solid wastes, forestry and agricultural residues, municipal biosolids, animal by-products, and industrial wastes derived substantially from non-fossil, carbonaceous substances.

ESTIMATED MISSISSIPPI BIOMASS BY SOURCE (TONS)



## USES OF BIOMASS

Mississippi produces or has the capability to produce sufficient feed stock for building and sustaining markets for energy, fuel, and other products. The principal use of biomass in the state is in the wood products industry where it is used to make paper, wood products, landscape mulch, and as a fuel to generate steam and electricity. Biomass resources are readily available in all parts of the state and new dedicated biomass sources are being researched to determine the most efficient systems to produce sufficient volumes of biomass with the proper characteristics to meet the needs of those who are developing biomass conversion technologies.

## BIOMASS TECHNOLOGIES

Many technologies for conversion of biomass to energy, fuel, or products are well proven and off the shelf equipment is available to implement those technologies. These technologies include the conversion of vegetable oils, used cooking oil, and animal fats to biodiesel; the conversion of corn to ethanol; the conversion of wood sawmill residue to wood pellets; the conversion of animal by-products and landfill gas to biogas; and, the conversion of bagasse to heat and energy. These

conversion techniques represent forms of thermochemical, biological, mechanical, and direct combustion technologies. Today, the race is on to develop new cost effective, efficient, and viable technologies that can convert cellulosic biomass resources into transportation fuels, such as ethanol. Because petroleum represents 40% of the nation's energy supply, breakthroughs in the conversion of biomass to transportation fuels will make a major contribution to national security by reducing dependence on imported petroleum.

## BECOME A MEMBER

The MBC is looking for companies, organizations, and individuals dedicated and committed to advancing biomass utilization in Mississippi.

As a member of the MBC:

- ✓ You will receive discounts on MBC events, such as conferences and workshops.
- ✓ You will receive the MBC newsletter, BioBrief, and other information related to current biomass uses, research, and projects.
- ✓ You will have an opportunity to network, collaborate, and share information with others interested in biomass products and research.

Please visit our Website at  
[www.ms-biomass.org](http://www.ms-biomass.org)

to download the membership request form.